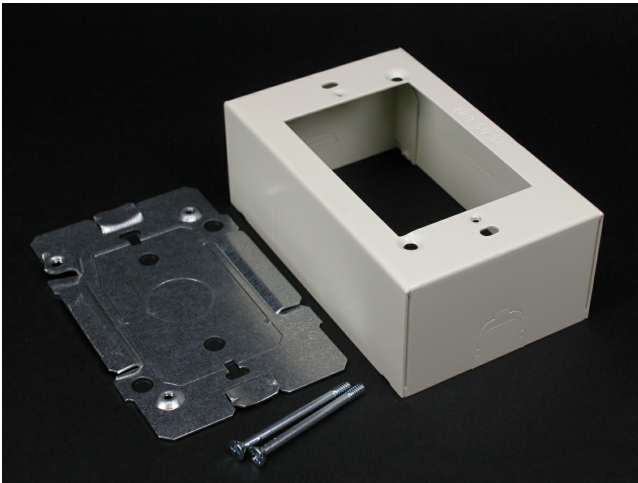




Wiremold  
STL SWITCH & RECEPT BOX 2400 IVORY  
Part No. CV2448



2400® Series Raceway is a single compartment raceway designed for communication or power applications and ideal for use in classrooms, offices, and hotel applications, or anywhere a small low profile raceway is needed. 2400D® Series Divided Raceway is a low profile steel raceway for use where a limited number of power and low voltage cables are required in the same raceway.

## Features & Benefits

One-gang device box. Cover has twistout for 2400 Series Raceway on each side, and one twistout for 500 and 700 Series Raceway on the top and bottom. Base has knockout to enable extension from existing single-gang, flush wall box and 1/2" trade size KOs. Accepts industry standard faceplates for electrical and communication devices. NOTE: Accepts NEMA single-gang standard faceplates. Certified to Canadian Safety Standards for sale in Canada. When ordering this product for Canada, add "C" to the beginning of the part number to denote Canadian versions, i.e. "CV2444" or "C2444-FW".

## Specifications

### General Info

Product Line	Wiremold	UPC Number	786776548440
Country Of Origin	United States		

### Listing Agencies / 3rd Party Agencies

cULus ListingNumber	E41751	cULus Listed	Yes
---------------------	--------	--------------	-----

### Additional Information

RoHS Conformant	Yes
-----------------	-----