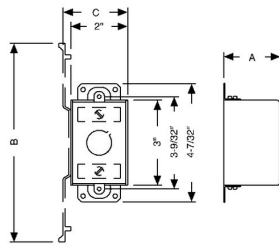




## 3 IN. X 2 IN. SWITCH BOXES - 2 TO 3-1/2 IN. DEEP WITH ARMORED CABLE / METAL CLAD / FLEX CLAMPS

2-1/2 in. Deep Switch Boxes - Gangable with Armored Cable/Metal Clad/Flex Clamps  
Plaster Ears

A49



Catalog #: 518

### APPLICATIONS

RACO® Switch boxes are used to house wiring devices such as switches and outlets  
N/A

### PRODUCT FEATURES

Gangable switch boxes offer the option of constructing a box to hold two or more devices  
Plaster ears allow a box to be used in "old work" applications

### UL LISTED

File E 195978

### COMPLIANCES

All RACO® single gang, two gang, 4 in. square, and single gang gangable UL listed steel boxes are acceptable for use in 2-hour fire rated walls. For additional information, consult UL "Fire Resistance Directory" or the UL website at [www.ul.com](http://www.ul.com)

### FIRE RESISTANCE

Acceptable for use in 2-hour rated walls

### GENERAL PRODUCT INFORMATION

Wiring System: Armored Cable/Metal Clad/MCI-A/Flex

### CONFIGURATION

End Knockouts: ---  
Ends Cable: 4  
Bracket Type: No Bracket  
Side Knockout(s): ---  
Bottom Knockout(s): (1) 1/2 in.

### DRAWING DIMENSIONS

Dimension A: 2-1/2 in.

### PRODUCT MEASUREMENTS

Depth: 2-1/2 in.  
Cubic Inches (cm<sup>3</sup>): 12.5 (204.8)  
Wt. Ea. (Lbs.): 0.610  
Product Length (in.): 2.50  
Product Width (in.): 4.22  
Product Height (in.): 2.00

### PACKAGING

Minimum Pack Qty.: 25  
Std. Pkg.: 25  
Product UPC-A Labeled: Yes  
Weight (Lbs. Per/C): 61.00  
Ship Carton Length (in.): 12.88  
Ship Carton Width (in.): 5.63  
Ship Carton Height (in.): 8.75  
Ctn Weight (Lbs.): 15.25  
Pallet Qty: 3150  
UPC Number: 050169005187  
I2of5: 40050169005185