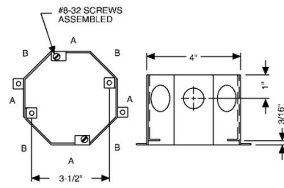




CONCRETE RINGS, CEILING BOXES & COVER PLATES

Concrete Rings 4 in. Deep

A57



Catalog #: 274

APPLICATIONS

RACO® Concrete rings are used with poured deck (floor) in high-rise construction. These boxes are installed on wooden or steel concrete forms. After the forms are removed, the box is flush with the concrete.

PRODUCT FEATURES

- Flat sides provide excellent contact for locknuts
- External ears are used to nail the ring to the wood form
- Top cover is removable for before-pour work
- Ears on inside of box are for fixtures
- Waxed fixture ears prevent concrete from interfering with the threads
- A variety of covers are available
- Cover plate must be ordered separately with all RACO® concrete rings
- N/A

UL LISTED

File E195978

GENERAL PRODUCT INFORMATION

Wiring System: Conduit

RECOMMENDED MAX LOAD

Ceiling Fan (Dynamic) Lbs.: No
 Fixture (Static) Lbs.: 50

CONFIGURATION

Drawn or Welded: Welded
 Side Knockout(s): Double Row KO's of 1/2 in. and 3/4 in.

PRODUCT MEASUREMENTS

Depth: 4 in.
 Cubic Inches (cm³): 49.3 (807.8)
 Wt. Ea. (Lbs.): 1.030
 Product Length (in.): 4.00
 Product Width (in.): 4.00
 Product Height (in.): 4.00

PACKAGING

Minimum Pack Qty.: 20
 Std. Pkg.: 20
 Product UPC-A Labeled: No
 Weight (Lbs. Per/C): 103.00
 Ship Carton Length (in.): 20.25
 Ship Carton Width (in.): 8.50
 Ship Carton Height (in.): 10.25
 Ctn Weight (Lbs.): 20.60
 Pallet Qty: 1000
 UPC Number: 050169002742
 I2of5: 50050169002747