


EMT Combination Couplings


Type 9000W

Use:
For compression EMT to flexible steel conduit

Material/Finish:
Malleable Iron/Zinc Plated

Third Party Certification:

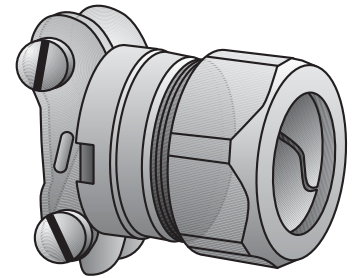
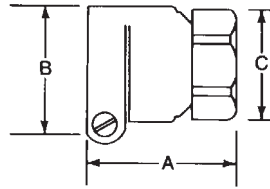
 UL Listed: E-11853

 CSA Certified: 9795

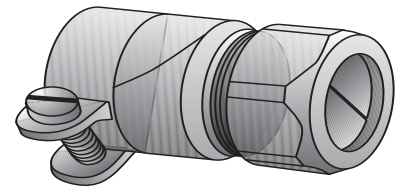
Applicable Third Party Standards:
UL Standard: 514B
CSA Standard: C22.2 No. 18
Federal Spec: W-F-406E
NEMA: FB-1

Trade Size (inches)	Catalog Number	Dimensions in Inches		
		A	B	C
1/2 3/8	9038-W*	1 3/16	1 7/16	1 1/8
1/2	9050-W	1 5/8	1 1/2	1 1/4
3/4	9075-W	1 15/16	1 3/4	1 1/2
1	9100-W	2	2 3/16	1 7/8
1 1/4	9125-W	2 3/16	2 7/16	2 1/4
1 1/2	9150-W	2 15/16	2 3/4	2 1/2
2	9200-W	3 1/4	3 1/2	3 1/16

* Not UL Listed



Type 9038-W



Type 9050-W — Type 9200-W