



PRODUCT 20 CATALOG 21

SELLING ONLY TO DISTRIBUTORS

CONTENTS

STRAPPING TOOLS & DISPENSERS

- 2 Steel Tensioners
 - Stainless Steel Tensioner
- 3 Steel Sealers & Cutters
 - Sealless Tensioners
 - Strap Cutters
- 4 Poly & Cord Tensioners
- 5 Poly Sealers & Accessories
 - Battery Sealers
 - Battery Tools
 - Cord Tensioner
- 7 Seals: Steel & Poly
 - Poly & Cord Buckles
- 8 Steel & Poly Dispensers
- 10 Mobile Strapping Trucks
 - Tool Balancers
- 11 Cord Dispensers
- 12 Pre-Cuts & Edge Protectors
- 13 Strapping KITS

14 UTILITY KNIVES

BANDS / TAPE / CARTONS

- 16 Bands (Standard / Large / Pallet)
- 17 Tape Dispensers
 - Carton Stands & Corner Cutter

PACKAGING DISPENSERS

- 18 Manual Kraft & Poly Dispensers (Manual, Mobile / Stationary)
 - Peanut Chute
 - Honeycomb Dispensers
- 20 Kraft Paper Dispensers (Semi-Automatic / Automatic)

MATERIAL DISPENSERS

- 21 Bubble / Foam / Poly Dispensers
- 22 Slide Cutters (Manual / Semi-Automatic / Automatic)
- 24 Foam / Single Face Dispensers (Manual / Semi-Automatic / Automatic)

25 POLY TUBING & BAGS DISPENSERS

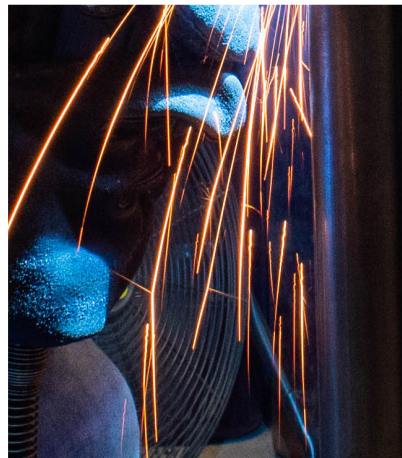
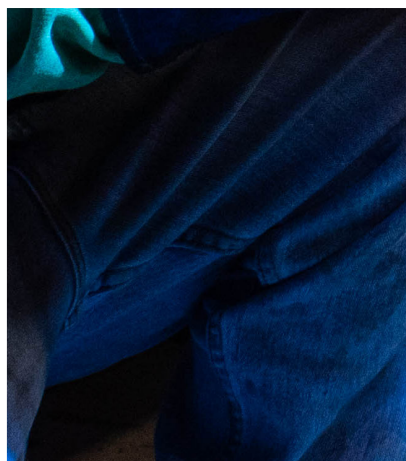
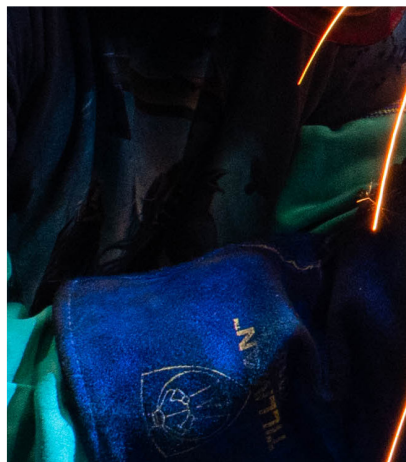
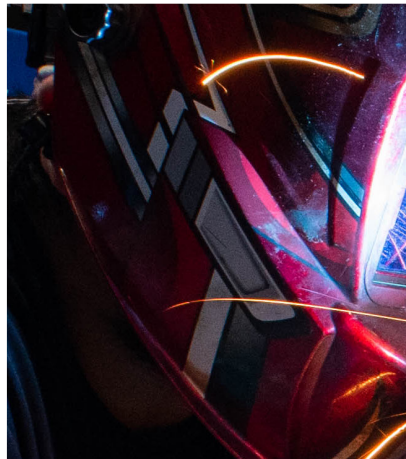
STRETCH FILM DISPENSERS & ACCESSORIES

- 26 Film Dispensers & Holders
 - Magnetic Tray & Boxes
 - Stretch Strapping Dispensers
 - Stretch Strapping Accessories

ORBITAL WRAPPERS

- 30 Motorized Ring Wrappers (25" & 48" diameter)
- 31 Box Wrappers (Manual / Motorized)

31 CUSTOM PROJECTS



STEEL TENSIONERS



EP-1400

Compact Feedwheel Tensioner



Strap Range: 3/8-3/4"

Strap Gauges: .018 - .023

Flat loads

Unlimited take-up



EP-1410

Economy Feedwheel Tensioner



Strap Range: 3/8-3/4"

Strap Gauges: .018 - .023

Flat loads

Unlimited take-up



EP-1425

SD Feedwheel Tensioner



Strap Range: 3/8-3/4"

Strap Gauges: .018 - .025

Flat loads

Unlimited take-up



EP-1450

HD Feedwheel Tensioner



Strap Range: 3/4-1 1/4"

Strap Gauges: .025 - .044

Flat loads

Unlimited take-up



EP-1500

Economy Windlass Tensioner

Strap Range: 3/4-1 1/4"

Strap Gauges: .023 - .031

Flat loads

Limited take-up



EP-1525

Premium Windlass Tensioner

Strap Range: 3/4-1 1/4"

Strap Gauges: .028 - .044

Flat loads

Limited take-up



EP-1550

Premium Windlass Tensioner w/ Cutter

Strap Range: 3/4-1 1/4"

Strap Gauges: .028 - .044

Flat loads

Limited take-up



EP-1610

HD Compact Pusher Tensioner



Strap Range: 3/8-3/4"

Strap Gauges: .020 - .031

Round or irregular loads

Unlimited take-up



EP-1620

HD Feedwheel Pusher Tensioner



Strap Range: 5/8-1 1/4"

Strap Gauges: .023 - .044

Round or irregular loads

Unlimited take-up



EP-1625

Light Duty Pusher Tensioner



Strap Range: 3/8-3/4"

Strap Gauges: .015 - .023

Round or irregular loads

Limited take-up



EP-1650

HD Pusher Rack Tensioner

Strap Range: 5/8-1 1/4"

Strap Gauges: .023 - .044

Round or irregular loads

Limited take-up



EP-1680

Pneumatic Pusher Tensioner

Strap Range: 3/4-1 1/4"

Strap Gauges: .031 - .047

Air Pressure: 70-90 lbs

Tension Speed: 3.35"/sec

Tension Force: 1,910 lbs



RSA-590

Stainless Steel Bander



Strap Range: 1/4"

Strap Gauge: .016

Use stainless steel strap

Round Loads

Tensions, seals, & cuts

8 tension settings

STEEL SEALERS & CUTTERS



EP-1800 
SD Double-Notch Front Action Sealer

Size Options:
3/8", 1/2", 5/8", 3/4"

Strap Gauges: .015 - .025

Use open seals

Double-notch, down cut



EP-1810
Economy Front Action Sealer

Size Options: 1/2", 5/8", 3/4"

Strap Gauges: .015 - .023

Use open seals

Double-notch, down cut



EP-1820 
SD Single-Notch Front Action Sealer

Size Options:
3/8", 1/2", 5/8", 3/4"

Strap Gauges: .015 - .025

Use closed seals

Single-notch, up cut



EP-1850 
HD Front Action Sealer

Size Options: 1/2", 5/8", 3/4"

Strap Gauges: .023 - .031

Use open seals

Double-notch, down cut



EP-1870 
SD Double-Notch Side Action Sealer

Size Options: 3/4"

Strap Gauges: .020 - .035

Use open or closed seals

Double-notch, down cut

(24" handles available by request)



EP-1880 
SD Single-Notch Side Action Sealer

Size Options: 3/4", 1", 1 1/4"

Strap Gauges: .025 - .044

Use closed seals

Single-notch, down cut



EP-1900 
HD Double-Notch Side Action Sealer

Size Options: 3/4", 1", 1 1/4"

Strap Gauges: .025 - .044

Use HD open or closed seals

Double-notch, up cut

(Steel handles available by request)



EP-1980
Pneumatic Sealer

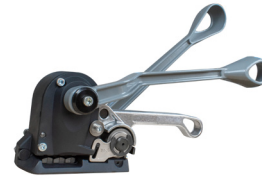
Size Options: 3/4", 1 1/4"

Strap Gauges: .031 - .047

Air Pressure: 70 - 90 PSI

Use closed seals

Single-notch



EP-2000
HD Sealless Tool

Size Options: 1/2", 5/8", 3/4"

Strap Gauges: .018 - .025 HT

Tensions, seals, & cuts



EP-2010
SD Sealless Tool

Size Options: 1/2", 5/8", 3/4"

Strap Gauges: .015 - .023

Tensions, seals, & cuts



EP-2400
Economy Strap Shears

Strap Range: 3/8-3/4"

Strap Gauges: up to .028

Single-hand operated



EP-2450
Premium Strap Shears

Strap Range: 3/8-1 1/4"

Strap Gauges: up to .031

Low nose profile



EP-2475
Medium Range Strap Shears

Strap Range: 3/4-1 1/4"

Strap Gauges up to .044

Two-hand operated



EP-2500 
HD Strap Shears

Strap Range: 3/4-2"

Strap Gauges: up to .050

Two-hand operated

POLY & CORD *TENSIONERS*



EP-1100
SD Windlass Tensioner

Polypropylene strapping

Strap Range: 1/2-3/4"

Flat loads



EP-1120
SD Poly Tensioner

Polyester & Polypropylene strapping

Strap Range: 1/2-3/4"

Flat loads



EP-1140
Cord Strap Bar

Manual pull for Cord strapping

3/4" solid steel round stock

Use wire buckles

T-handle for extra leverage



EP-1150
Premium Windlass Tensioner

Polyester & Polypropylene strapping

Strap Range: 1/2-3/4"

Flat loads



EP-1158
Knuckle Tool

Cord strapping

Strap Range: 1/2-3/4"

Use wire buckles

Round or irregular loads



EP-1160
Premium Windlass Cord Tensioner

Cord strapping

Strap Range: 1/2-3/4"

Use wire buckles

Flat loads



EP-1175
Premium Windlass Cord Pusher Tensioner

Cord strapping

Strap Range: 1/2-3/4"

Use wire buckles

Round or irregular loads



EP-1185
Premium Poly Pusher Tensioner

Polyester & Polypropylene strapping

Strap Range: 1/2-3/4"

Use serrated pusher seals

Round or irregular loads



EP-1188
Economy Large Cord Tensioner

Cord strapping

Strap Range: 5/8-1 1/2"

Use wire buckles

Flat loads



EP-1190
HD Jumbo Cord Tensioner

Cord strapping

Strap Range: 5/8-1 1/2"

Use wire buckles

Flat loads



EP-1195
HD Jumbo Poly Tensioner

Polyester, Polypropylene & Composite strapping

Strap Range: 5/8-1 1/2"

Flat loads



EP-1198
HD Jumbo Knuckle Tool

Cord strapping

Strap Range: 3/4-1 1/2"

Use wire buckles

Round or irregular loads





EP-1200

Economy Front Action Sealer

Polypropylene strapping

Size Options: 1/2", 5/8", 3/4"

Use snap-on open seals



EP-1225

Premium Front Action Sealer

Polypropylene strapping

Size Options: 1/2", 5/8", 3/4"

Use snap-on open seals



EP-1235

Bidirectional Front Action Sealer

Polyester strapping

Size Options: 1/2", 5/8", 3/4"

Use serrated seals

17" handles on 1/2" & 5/8"
25" handles on 3/4"



EP-1245

Symmetrical Sealer

Polyester strapping

Size Options: 5/8", 3/4"

Use symmetrical seals

Front action, bidirectional

17" handles



EP-1250

Unidirectional Premium Front Action Sealer

Polyester strapping

Size Options: 1/2", 5/8", 3/4"

Use serrated seals

17" handles on 1/2" & 5/8"
25" handles on 3/4"

Blue: long jaw | Orange: short jaw



EP-1255

Economy Polyester Sealer

Polyester strapping

Size Options: 5/8"

Use serrated seals

17" handles



EP-1260

Friction Welder - Polypropylene

Polypropylene strapping

Strap Widths: 1/2-1"

Flat loads

5 time settings

(Battery & charger sold separately, pg. 6)

BATTERY TOOL



EP-1265

Friction Welder - Polyester

Polyester strapping

Strap Widths: 1/2-1"

Flat loads

5 time settings

(Battery & charger sold separately, pg. 6)

BATTERY TOOL



E1260-28-D
18v Li-Ion Battery

18 Volts, 4 AMP

Charge indicator light



E1260-58
Battery Charger

Indicator light

Regional electrical plugs available by request



EP-1275
HD Premium Front Action Micro-Grit Sealer



Polyester & Polypropylene strapping

Size Options: 1/2", 5/8"

Use micro-grit seals



EP-1285
Serrated Pusher Sealer



Polyester & Polypropylene strapping

Size Options: 1/2", 5/8", 3/4"

Use serrated pusher seals



EP-1295
HD Side Action Micro-Grit Sealer



Polyester strapping

Size Options: 5/8", 3/4"

Use micro-grit seals



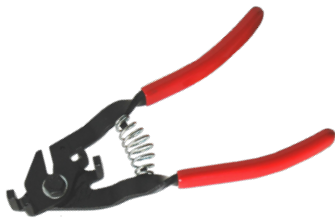
EP-1320
Flexible Flat Lacing Rod



54" overall length

Easy clip technology

Helps feed strap under pallets



EP-1340
Poly Buckle Tensioner

Polypropylene strapping

Strap Range: 1/2-3/4"

Use wire buckles



EP-1345
Battery Powered Cord Strap Tensioner w/ Cutter

BATTERY TOOL

Cord strapping

Strap Widths: up to 1 1/2"

Flat loads

Automatically pulls to desired tension

Includes charger & two batteries



EP-1355
HD Battery Tool

BATTERY TOOL

Polyester & Polypropylene strapping

Strap Options: 1/2-5/8", 5/8-3/4"

Break Strength: up to 425 lbs for 1/2-5/8", up to 925 lbs for 5/8-3/4"

Tensions & seals w/ adjustable time settings

Includes charger & two batteries

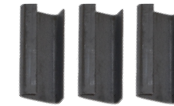
SEALS

STEEL

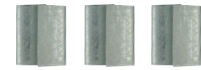
PART #	DESCRIPTION (PER CASE)	WEIGHT	QTY
S38S02	3/8" Snap-on/Open	12.5 lbs	2500
S12S02	1/2" Snap-on/Open	15 lbs	2500
S58S02	5/8" Snap-on/Open	17.5 lbs	2500
S34S02	3/4" Snap-on/Open	20 lbs	2500
S34S03	3/4" HD Snap-on/Open	26 lbs	1000
S114S03	1 1/4" HD Snap-on/Open	53 lbs	1000
S38P02	3/8" Push-on/Close	17.5 lbs	2500
S12P02	1/2" Push-on/Close	20 lbs	2500
S58P02	5/8" Push-on/Close	25 lbs	2500
S34P02	3/4" Push-on/Close	35 lbs	2500
S34P03	3/4" HD Push-on/Close	38 lbs	1000
S114P03	1 1/4" HD Push-on/Close	71 lbs	1000



S12S02



S34S03



S58P02



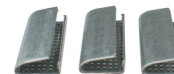
S114P03

POLY

P12S02	1/2" Snap-on	12 lbs	1000
P58S02	5/8" Snap-on	15 lbs	1000
P34S02	3/4" Snap-on	18 lbs	1000
P12SS3	1/2" Snap-on, serrated	13 lbs	1000
P58SS3	5/8" Snap-on, serrated	20 lbs	1000
P34SS3	3/4" Snap-on, serrated	22 lbs	1000
P58SS4	5/8" HD Snap-on, serrated	# lbs	1000
P12P03	1/2" Push-on, serrated	9 lbs	1000
P58P03	5/8" Push-on, serrated	13 lbs	1000
P34P03	3/4" Push-on, serrated	15 lbs	1000
P12PS3	1/2" HD Micro-Grit	22 lbs	1000
P58PS4	5/8" HD Micro-Grit	28 lbs	1000
P34PS4	3/4" HD Micro-Grit	31 lbs	1000
P58SY4	5/8" Symmetrical	46 lbs	1000
P34SY4	3/4" Symmetrical	51 lbs	1000
P34SY6	3/4" HD Double Seal Clips	47 lbs	500



P12S02



P12SS3



P58PS4



P34SY4

BUCKLES

PART #	DESCRIPTION	GAUGE	QTY
P12WB2-GA	1/2" Galvanized/Clear Wire	.108"	1000
P12WB3-GA	1/2" HD Galvanized/Clear Wire	.118"	1000
P58WB3-GA	5/8" HD Galvanized/Clear Wire	.138"	1000
P34WB3-GA	3/4" HD Galvanized/Clear Wire	.157"	1000
P100WB3-GA	1" HD Galvanized/Clear Wire	.197"	500
P114WB3-GA	1 1/4" HD Galvanized/Clear Wire	.276"	250
P12PB2	1/2" Plastic	STD	1000
P58PB2	5/8" Plastic	STD	1000
P12WB2-PH	1/2" Phosphate Wire	.108"	1000
P12WB3-PH	1/2" HD Phosphate Wire	.118"	1000
P58WB3-PH	5/8" HD Phosphate Wire	.138"	1000
P34WB3-PH	3/4" HD Phosphate Wire	.157"	1000
P100WB3-PH	1" HD Phosphate Wire	.197"	500
P114WB3-PH	1 1/4" HD Phosphate Wire	.276"	250



P58WB3-GA



P100WB3-GA



P12WB2-PH



P34WB3-PH

STEEL & POLY *DISPENSERS*



EP-3003
Core Corrector



Helps reset 16" damaged cores
Lightweight, portable unit



EP-3005
Strap Caddy



Use Steel strapping mini coils
Lightweight portable unit



EP-3050 (oscillated)
Horizontal Wall/Forklift Mountable Strapping Dispenser



Oscillated wound
Core ID: 16"
Face Width: 3-6"
(8" available by request)



EP-3055 (ribbon)
Horizontal Wall/Forklift Mountable Strapping Dispenser



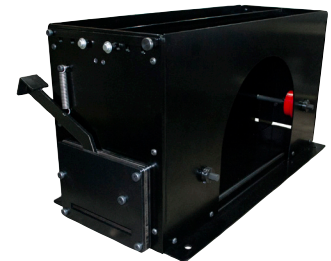
Ribbon wound
Strap Range: 3/4", 1 1/4"
Core ID: 16"



EP-3065 SS/PS
HD Cobra Strapping Dispenser



Order for Steel or Poly strapping
Ribbon wound
Strap Range: 3/4", 1 1/4"
Feeds coil from inside



EP-3075
Floor Mount w/ Cutter



Ribbon wound
Holds: two steel ribbon coils or one oscillated roll (steel or poly)
Foot-activated cutter blade
(Forklift support part available & sold separately)



EP-3080
Standard Strapping Dispenser



- Oscillated wound
- Core ID: 16" (8" available by request)
- Face Width: 3-8"
- 10" rubber tires
- Quick load system



EP-3100
Premium Strapping Dispenser



- Oscillated wound
- Core ID: 16"
- Face Width: 3-6"
- 10" rubber tires



EP-3200
Premium Strapping Dispenser w/ Strap Troller



- Oscillated wound
- Core ID: 16"
- Face Width: 3-6"
- 10" rubber tires
(Pneumatic tires available by request)



EP-3200-HD
HD Premium Strapping Dispenser



- Oscillated wound
- Core ID: 16" (back supports 28" disk)
- 10" rubber tires
(Pneumatic tires available by request)



EP-3340
Ribbon-Wound Strapping Dispenser



- Ribbon wound
- Strap Range: 3/4-1 1/4"
- Core ID: 16"
- 10" rubber tires
(Pneumatic tires available by request)
- Quick load system



EP-3350
HD Ribbon-Wound Strapping Dispenser



- Ribbon wound
- Strap Range: 3/4", 1 1/4", 2"
- Core ID: 16"
- 10" rubber tires
(Pneumatic tires available by request)



EP-3400 SS/PS
Monster Cart



- Order for Steel or Poly strapping
- Ribbon wound
- Strap Range: 3/4", 1 1/4", 2"
- 16" pneumatic tires
- Two storage trays

MOBILE STRAPPING TRUCKS

EP-3000

Tool Balancer

EP-3000-TB-2 (4-7 lbs/ 2-3 kg)
 EP-3000-TB-3 (7-11 lbs/3-5 kg)
 EP-3000-TB-4 (11-15 lbs/5-7 kg)
 EP-3000-TB-5 (15-20 lbs/7-9 kg)
 EP-3000-TB-6 (33-49 lbs/15-22 kg)

Tool spring

External tension adjustment

Knob dispenses easily & rapidly

(Hanger sold separately)



EP-3500 (oscillated) EP-3505 (ribbon)



Mobile Strapping Truck
(standard version)

Steel & Poly strapping

Core ID: 16"

HD steel frame

Height adjustable (handle & tray)

Locking swivel casters

(Tool balancer, mast, hanger, & two floor trays sold separately)



EP-3520 (oscillated) EP-3525 (ribbon)



Strap Truck - Belly Bander
(horizontal version)

Steel & Poly strapping

Core ID: 16"

HD steel frame

Height adjustable (handle & tray)

Locking swivel casters

(Tool balancer, mast, & hanger sold separately)



EP-3550 (oscillated) EP-3555 (ribbon)



Tool Balancer Cart
(standard version w/ tool mast)

Steel & Poly strapping

Core ID: 16"

HD steel frame

Height adjustable (handle & tray)

Locking swivel casters

(Tool balancer & hanger sold separately)



EP-3560 (oscillated) EP-3565 (ribbon)



Cobra Unit - Tool Balancer Cart
(cobra style w/ tool mast)

Steel strapping

Size Options: 3/4", 1 1/4"

Core ID: 16"

HD steel frame

Feeds coil from inside

Locking swivel casters

(Tool balancer & hanger sold separately)



EP-3570 (oscillated) EP-3575 (ribbon)



Belly Bander
(horizontal version w/ tool mast)

Steel & Poly strapping

Core ID: 16"

HD steel frame

Height adjustable (handle & tray)

Locking swivel casters

(Tool balancer & hanger sold separately)





EP-3008

Cord Cradle

Disk Insert Options for Core ID:
3", 6", 8"

Quick load system

Tray optional



EP-3015

Lightweight Poly/Cord Strapping Dispenser

Polypropylene & Cord strapping

Disk Insert Options for Core ID:
3", 6", 8", 16"

6" rubber tires

Quick-load system



EP-3020

Stationary Cord Strapping Dispenser

Core ID: 3"

Face Width: up to 8"

Table, floor, & wall mountable



EP-3025

Mobile Floor Cord Strapping Dispenser

Face Width: up to 8"

Table, floor, & wall mountable



EP-3025-NZ

Mobile Floor Cord Strapping Dispenser (NZ Version)

Disk Insert Options for Core ID:
3", 6", 8"

Face Width: up to 8"

Table, floor, & wall mountable
(Includes spin nut & flanges)



EP-3030 (ribbon)

Cord Wall Mount Unit

Disk Insert Options for Core ID:
3", 6", 8"

Quick load system

(Tray attachment kit sold separately)



EP-3032

Cord Forklift Mount Dispenser

Disk Insert Options for Core ID:
3", 6", 8"

Quick load system

Manual installation



EP-3035 (oscillated)

Cord Wall Mount Unit

Disk Insert Options for Core ID: 3", 6", 8"

Quick load system

(Tray attachment kit sold separately)



EP-3040 (ribbon)

Cord Strapping Dispenser

Disk Insert Options for Core ID: 1 1/2", 3", 6", 8", 16"
(1" available by request)

10" tires

Quick load system



EP-3045 (oscillated)

Cord Strapping Dispenser

Disk Insert Options for Core ID: 1 1/2", 3", 6", 8"
(1" available by request)

10" tires

Quick load system

PRE-CUTS & EDGE PROTECTORS

PRE-CUTS

PART #	DESCRIPTION	QTY	WEIGHT (PER CASE)
P12PC2-BK	1/2"x 17' Black	500/case	32 lbs
P12PC2-BL	1/2"x 17' Blue	500/case	32 lbs
P12PC2-GN	1/2"x 17' Green	500/case	32 lbs
P12PC2-RD	1/2"x 17' Red	500/case	32 lbs
P12PC2-YW	1/2"x 17' Yellow	500/case	32 lbs
P12PC2-WT	1/2"x 17' White	500/case	32 lbs

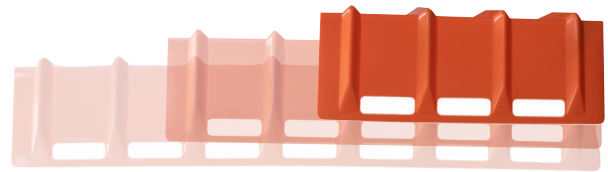


EDGE PROTECTORS

PART #	DESCRIPTION	FOR	WEIGHT (PER CASE)	QTY
EP-5620	1 3/4 x 1" Black Poly	3/4" strap	10 lbs	1000
EP-5620-USA	1 7/8 x 1" White Poly	3/4" strap	10 lbs	1000
EP-5640	2 1/4 x 1 5/8" Black Poly	1 1/2" strap	24 lbs	1000
EP-5640-USA	2 1/2 x 3/4" Black Poly	1 1/2" strap	25 lbs	1000
EP-5660	2 1/2 x 2" White Poly	1 1/4" strap	31 lbs	1000
EP-5670	4" Jumbo	Lashing		
EP-5675	4 x 4 x 12"	Lashing		
EP-5680	12" Jumbo	Lashing		
EP-5680-24	8 x 8 x 24" Jumbo	Lashing		
EP-5680-36	8 x 8 x 36" Jumbo	Lashing		
EP-5680-48	8 x 8 x 48" Jumbo	Lashing		
EP-5690	8" Tarp Guard	Tarp		



EP-5675 EP-5680 EP-5690 EP-5670
Jumbo



EP-5680 oversize, sizes 24", 36", 48"

STRAPPING KITS



S12K02 - Steel Kit, Open Seals



PP12K02 - Polypropylene, Economy



PT12K02 - Polyester Kit, Economy



CS12K02 - Woven Polyester, Economy

Steel

Open Seals & Closed Seals

PART #	TYPE	CONTENTS
S12K01	1/2" Strapping, Open Seals	EP-3100, EP-1810-12, EP-1410, EP-2400, S12SO2 (1 case)
S34K01	3/4" Strapping, Open Seals	EP-3100, EP-1810-34, EP-1410, EP-2400, S34SO2 (1 case)
S12K02	1/2" Strapping, Open Seals	EP-3100, EP-1800-12, EP-1425, EP-2450, S12SO2 (1 case)
S58K02	5/8" Strapping, Open Seals	EP-3100, EP-1800-58, EP-1425, EP-2450, S58SO2 (1 case)
S34K02	3/4" Strapping, Open Seals	EP-3100, EP-1800-34, EP-1425, EP-2450, S34SO2 (1 case)
S12KP2	1/2" Strapping, Closed Seals	EP-3100, EP-1820-12, EP-1610, EP-2450, S12PO2 (1 case)
S58KP2	5/8" Strapping, Closed Seals	EP-3100, EP-1820-58, EP-1610, EP-2450, S58PO2 (1 case)
S34KP2	3/4" Strapping, Closed Seals	EP-3100, EP-1820-34, EP-1610, EP-2450, S34PO2 (1 case)

Polypropylene

Economy & HD

PART #	TYPE	CONTENTS
PP12K02	1/2" strapping, economy	EP-3080, EP-1200-12, EP-1100, P12SO2 (1 case)
PP58K02	5/8" strapping, economy	EP-3080, EP-1200-58, EP-1100, P58SO2 (1 case)
PP34K02	3/4" strapping, economy	EP-3080, EP-1200-34, EP-1100, P34SO2 (1 case)
PP12K03	1/2" strapping, HD	EP-3080, EP-1225-12, EP-1150, P12SO2 (1 case)
PP58K03	5/8" strapping, HD	EP-3080, EP-1225-58, EP-1150, P58SO2 (1 case)
PP34K03	3/4" strapping, HD	EP-3080, EP-1225-34, EP-1150, P34SO2 (1 case)

Polyester

Economy & HD

PART #	TYPE	CONTENTS
PT12K02	1/2" strapping, economy	EP-3100, EP-1255-12, EP-1120, P12SS3 (1 case)
PT58K02	5/8" strapping, economy	EP-3100, EP-1255-58, EP-1120, P58SS3 (1 case)
PT34K02	3/4" strapping, economy	EP-3100, EP-1255-34, EP-1120, P34SS3 (1 case)
PT12K03	1/2" strapping, HD	EP-3100, EP-1250-12, EP-1150, P12SS3 (1 case)
PT58K03	5/8" strapping, HD	EP-3100, EP-1250-58, EP-1150, P58SS3 (1 case)
PT34K03	3/4" strapping, HD	EP-3100, EP-1250-34, EP-1150, P34SS3 (1 case)

Woven Polyester

Economy & HD

PART #	TYPE	CONTENTS
CS12K02	1/2" strapping, economy	EP-3008, EP-1140, P12WB2 (1 case)
CS58K02	5/8" strapping, economy	EP-3008, EP-1140, P58WB3 (1 case)
CS34K02	3/4" strapping, economy	EP-3008, EP-1140, P34WB3 (1 case)
CS12K03	1/2" strapping, HD	EP-3045, EP-1160, P12WB3 (1 case)
CS58K03	5/8" strapping, HD	EP-3045, EP-1160, P58WB3 (1 case)
CS34K03	3/4" strapping, HD	EP-3045, EP-1160, P34WB3 (1 case)

UTILITY KNIVES



EP-100

Retractable Thin Snap-Off Knife

- Steel track
- Built-in blade breaker
- 60 per case



EP-110

Retractable SD Snap-Off Knife

- Built-in blade breaker
- Durable plastic handle
- 60 per case



EP-120

Retractable Translucent Knife

- Lightweight
- High visibility - see through body
- 50 per case
(Includes blue, pink, green, & orange)



EP-140

Retractable HD Snap-Off Knife

- Durable steel track
- Built-in blade breaker
- Ergonomic anti-slip grip
- 24 per case



EP-150

SD Thin Snap-Off Safety Knife

- Retractable & self-retracting
- Durable steel track
- Built-in blade breaker
- Ergonomic rubber grip
- 12 per case



EP-160

HD Snap-Off Safety Knife

- Retractable & self-retracting
- Durable steel track
- Built-in blade breaker
- Ergonomic rubber grip
- 12 per case



EP-180

Retractable Extra HD Snap-Off Knife

- Built-in blade breaker
- Ergonomic soft rubber grip
- 24 per case



EP-190

Retractable Knife w/ Scoring Wheel

- HD metal body
- Wheel scores & resizes boxes easily
- 12 per case



EP-200

Retractable Classic Design

- HD metal body
- 12 per case



EP-210

Retractable Steel Knife w/ Rubber Casing

- Cuts cartons, film, & string
- Soft-touch grip
- 12 per case



EP-212

T-Style Economy Lightweight Cutter

- Ergonomic handle
- 10 per case



EP-214

T-Style Cutter

- Medium-duty
- Robust design
- 10 per case



EP-215

T-Style Rotary Cutter

- Protected circular blade
- Ergonomic design
- Magnet plug hole (magnet sold separately)
- 12 per case



EP-220

Specialty Cutter - Hook Knife

- Cuts cartons film, & string
- 36 per case



EP-222

Poly, Stretch Film, & Twine Cutter

- Mountable cutter for stretch film applicators
- 12 per case



EP-225

Safety Carton Opener - Hook Knife

- Metal nose for tape cutting
- Soft-touch grip
- 12 per case



EP-228

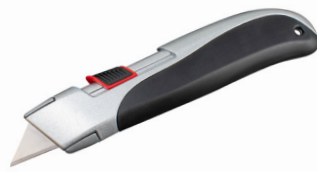
HD Hook Knife

HD metal body

Aluminum alloy handle

Soft-touch grip

6 per case



EP-230

HD Self-Retracting Safety Knife

HD metal body

Self-retracting blade after resistance

Soft-touch grip

12 per case



EP-235

Self-Retracting Knife w/ Holder

Self-retracting

Spare Blades: 3 inside handle
(ceramic blades available by request)

Soft-touch grip

6 per case



EP-240

Self-Retracting Safety Knife

Steel track

Built-in blade breaker

12 per case



EP-250

Top Actuated Retracting Knife

Self-retracting

Spare Blades: 5 inside handle

Soft-touch grip

Slide clamp blade change

12 per case



EP-255

Top Actuated Locking Knife

HD metal body

Spare Blades: 5 inside handle

Soft-touch grip

12 per case



EP-260

Specialty Cutter - Slide Knife

Glides through bubble, foam, poly, & woven cord

Single button blade change

12 per case



EP-265

Slide Knife

Glides through bubble, foam, poly, & woven cord

Solid aluminum construction

12 per case



EP-270

Tap Knife

Convenient tap open & close

Solid metal construction

12 per case



EP-280

Blade Dispenser

Safely dispenses blades

100 blades per dispenser

6 dispensers per case



EP-285

Retractable Knife w/ Knuckle Handle

Zinc body

Spare Blades: 3 inside handle

Soft-touch grip

Protective handle, stabilizes cut

6 per case



EP-290

Folding Knife

HD metal body

Single button blade change

12 per case



EP-295

Knife Holder

Solid plastic construction

Belt clip

1 per case



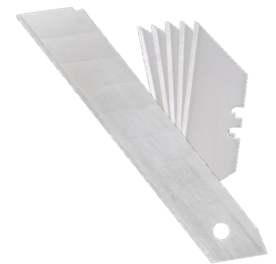
EP-297

Tool Belt

Leather pockets

Quick release nylon belt

Accommodates tape guns



Spare Blades

Available by request for all knives

STANDARD

PART #	DESCRIPTION (CIRC X WIDE)	QTY (PER LBS)
EP-4008	7/8 x 1/16"	6000
EP-4010	1 1/4 x 1/16"	5000
EP-4012	1 3/4 x 1/16"	2300
EP-4014	2 x 1/16"	2300
EP-4016	2 1/2 x 1/16"	1670
EP-4018	3 x 1/16"	1480
EP-4019	3 1/2 x 1/16"	1220
EP-4030	2 x 1/8"	1150
EP-4031	2 1/2 x 1/8"	900
EP-4032	3 x 1/8"	740
EP-4033	3 1/2 x 1/8"	630
EP-4057	1 3/4 x 1/8"	750
EP-4062	2 1/2 x 1/4"	375
EP-4064	3 1/2 x 1/4" (postal)	310
EP-4082	2 1/2 x 1/2"	230
EP-4084	3 1/2 x 1/2"	155
EP-4094	3 1/2 x 3/4"	100
EP-4105	5 x 5/8"	280
EP-4107	7 x 5/8"	40
EP-4117	7 x 1/8"	160
EP-4117B	7 x 1/8"	200
EP-4128	8 x 1/8"	160



EP-4008



EP-4062



EP-4214

LARGE

EP-4212	12 x 1/4"	55
EP-4214	14 x 1/4"	45
EP-4217	17 x 1/4"	35



EP-5092, Pallet

PALLET

PART #	DESCRIPTION (CIRC X WIDE)	FOR	QTY (APPROX.)	(MASTER)
EP-5034	34 x 1"	Bundling	12	144
EP-5056	56 x 3/4"	30 x 24" Pallet	12	144
EP-5072	72 x 3/4"	36 x 36" Pallet	12	144
EP-5084	84 x 3/4"	36-40 x 48" Pallet	12	144
EP-5092	92 x 3/4"	48 x 48" Pallet	12	144
EP-5292	92 x 7/8" (ribbed)	48 x 48" Pallet	12	144
EP-5484	84 x 1 3/4"	36-40 x 48" Pallet	10	100
EP-5492	92 x 1 1/2" HD	36-40 x 48" Pallet	10	100



CARTON STANDS & CORNER CUTTER



EP-600

Filament Dispenser

- 1" tape rolls
- Solid steel frame
- 100 per case



EP-610

Calm Shell Dispenser

- 2" tape rolls
- Solid steel frame
- 60 per case



EP-615

Manual Kraft Paper Dispenser

- 3" x 375 yards kraft tape rolls
- Quick pull & tear
- Table-top unit
- 4 per case



EP-5810

Carton Stand



- Solid steel construction
- Anti-slip wire design
- Adjustable for different sized boxes
- Rubber mounts (Casters sold separately)



EP-620

Mousetrap Style Dispenser

- Size Options: 2", 3" tape rolls
- Quick-snap load
- Blade guard
- Smooth rubber roller
- 24 per case



EP-635

Economy Pistol Grip Dispenser

- Size Options: 2", 3" tape rolls
- Blade guard
- Flexible wiper plate
- Smooth rubber roller
- 40 pre case (2") | 24 per case (3")



EP-675

Premium Pistol Grip Dispenser

- Size Options: 2", 3" tape roll
- Tension control knob
- Blade guard
- Flexible wiper plate
- Smooth rubber roller
- 24 per case (2") | 20 per case (3")



EP-5815

Two Story Carton Stand



- Solid steel construction
- Anti-slip wire design
- Adjustable for different sized boxes
- Rubber mounts (Casters sold separately)



EP-680

Deluxe Pistol Grip Dispenser

- Size Options: 2", 3" tape roll
- Self-retracting blade
- Soft-touch grip
- Flexible wiper plate
- Smooth rubber roller
- 24 per case (2") | 20 per case (3")



EP-685

HD Dispenser

- Size Options: 2", 3" tape roll
- Round for snug fit
- Flexible wiper plate
- Smooth rubber roller
- 24 per case (2") | 20 per case (3")



EP-695

Streamlined Dispenser

- Size Options: 2", 3" tape roll
- Blade guard
- Flexible wiper plate
- Smooth rubber roller
- 24 per case (2") | 12 per case (3")



EP-5825

Corner Board Cutter



- Corner Board Range: 2 x 2", 3 x 3"
- Thickness Range: .120 - .225
- Solid steel construction, Safety pin
- Table mountable

PACKAGING DISPENSERS



EP-5820
Peanut Chute



- Securely attaches to bag
- Easily pours loose fill
- Includes cap



EP-5910
Kraft Paper Dispenser



- Size Options: 12", 15", 18", 24", 36", 48", 60"
- Steel construction
- Quick load system



EP-5915
Paper/Poly Dispenser



- Size Options: 12", 24", 36", 48", 60", 72"
- Accommodates multiple rolls
- Steel construction
- (3rd level sold separately)



EP-5920
Industrial Dispenser



- Size Options: 12", 24", 36", 48", 60"
- Use paper, film, & foil
- Solid steel construction
- Table & wall mountable
- Industrial model



EP-5940
Dispenser w/ Serrated Blade



- Size Options: 12", 24", 36", 48", 60"
- Use paper, film, & foil
- Solid steel construction
- Table & wall mountable
- Industrial model



EP-5945
Sheeter Device



- Size Options: 24"
- Use kraft paper, poly sleeves, & stretch film
- Slide cutter



EP-5948-S
Honeycomb Dispenser - Single



- Core Size: 1-3"
- Easily & conveniently dispenses honeycomb paper
- Unique pressure roller system



EP-5948-D

Honeycomb Dispenser w/ Tissue Paper - Double



Core Size: 1-3"

Easily & conveniently dispenses honeycomb & tissue paper

Unique pressure roller system



EP-5950

Paper Dispenser w/ Crumpler Device



Size Options: 24", 36"

Solid steel construction

Table (horizontal) & wall mountable

(Wall attachment kit sold separately)



EP-5955

Paper Crumpler w/ Idler System



Size Options: 24", 36"

Solid steel construction

Idler brake system

Table (horizontal) & wall mountable

(Wall attachment kit sold separately)



EP-5960

Vertical Paper/Poly Dispenser



Size Options: 12", 24", 36", 48", 60"

Solid steel construction

(Casters sold separately)



EP-5970

Mobile Floor Unit



Solid steel construction

Height adjustable (telescoping)

Locking casters

(Kraft paper dispenser sold separately)





EP-5975

Adjustable Mobile Floor Unit



Solid steel construction

Height & angle adjustable

Locking casters

(Kraft paper dispenser sold separately, pg. 19)



EP-5978

Battery Paper Dispenser



Solid steel construction

Battery powered

Button & foot pedal operated

Height & angle adjustable

Locking casters

(Battery & charger sold separately, pg. 6)



EP-5980

Power Feed/ Manual Cut System



Solid steel construction

Foot pedal operated, reverse button, adjustable speed

Height & angle adjustable

Locking casters



EP-5985

Fully Automated Paper Crumpler



Solid steel construction

Touch screen & foot pedal operated

Feeds, dispenses, & cuts to length

Height & angle adjustable

Locking casters



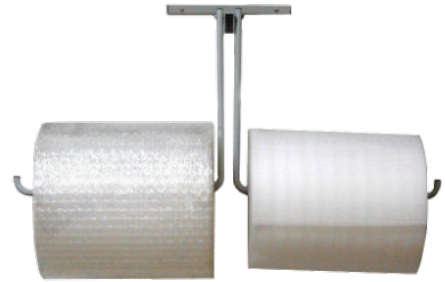
EP-6000S

Wall Mount Unit - Single Arm

Size Options: 12", 24", 36"

Solid steel tubing

Includes mounting kit



EP-6000D

Wall Mount Unit - Double Arm

Size Options: 12", 24", 36"

Solid steel tubing

Includes mounting kit & arm sizes are mixable



EP-6050S

Wall Mount Unit - Single Arm w/ Slide Cutter

Size Options: 12", 24", 36"

Slide cutter

Includes mounting kit



EP-6050D

Wall Mount Unit - Double Arm w/ Slide Cutter

Size Options: 12", 24", 36"

Slide cutter

Includes mounting kit & arm sizes are mixable



EP-6220S

Floor Unit - Single Arm

Size Options: 12", 24", 36"

Brake system

Height adjustable (telescoping)

Tear tag

Locking casters



EP-6220D

Floor Unit - Double Arm

Size Options: 12", 24", 36"

Brake system

Height adjustable (telescoping)

Tear tag

Locking casters

(Arm sizes are mixable)



EP-6250S

Floor Unit - Single Arm w/ Slide Cutter

Size Options: 12", 24", 36"

Slide cutter & brake system

Height adjustable (telescoping)

Locking casters



EP-6250D

Floor Unit - Double Arm w/ Slide Cutter

Size Options: 12", 24", 36"

Slide cutter & brake system

Height adjustable (telescoping)

Locking casters

(Arm sizes are mixable)





EP-6300

Economy Floor Unit



Size Options: 24", 48", 60", 72"

Use bubble, foam, poly sheets & shrink wrap

Slide cutter & wire brake

Gravity feed unit

Locking casters



EP-6420

Floor Unit - Single Arm



Size Options: 36", 48", 60", 72"

Single arm brake system
(Arm stabilizer available by request)

Tear tag

Locking casters



EP-6450

Floor Unit



Size Options: 36", 48", 60", 72"

Single arm brake system
(Arm stabilizer available by request)

Slide cutter

Locking casters



EP-6455

Bi-Support Roll Stand



Size Options: 24", 36", 48", 60", 72"

Use bubble, foam, & poly

Height adjustable

Locking casters

(Additional roll mounts sold separately)



EP-6460

Premium Manual Cutter



Size Options: 12", 24", 36", 48", 60", 72"

Robust rotary cutter system

Table top unit



EP-6465

Bi-Support Stand w/ Premium Manual Cutter

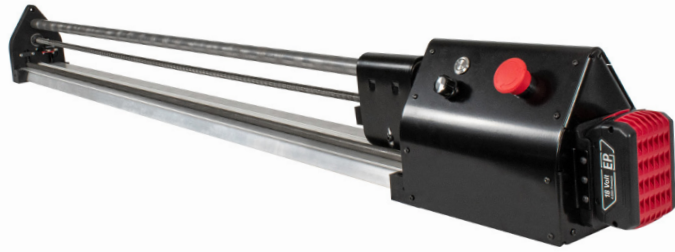


Size Options: 24", 36", 48", 60", 72"

Robust rotary cutter system

Solid steel construction

Locking casters



EP-6470

Automatic Slide Cutter

BATTERY TOOL 

Size Options: 24", 36", 48", 60", 72"	Robust rotary cutter system
Battery powered cutter	Manual load & pull
(Battery & charger sold separately, pg. 6)	



EP-6475

Bi-Support Stand w/ Automatic Slide Cutter

BATTERY TOOL 

Size Options: 24", 36", 48", 60", 72"	Use bubble, foam, poly, & paper
Battery powered cutter	Includes battery & charger (pg.6)
Manual load & pull	Locking casters



EP-6480

Automatic Sheet Cutter

BATTERY TOOL 

Size Options: 24", 36", 48", 60", 72"	Touch screen operated
Battery powered cutter	Includes battery & charger (pg.6)
Feeds, dispenses, & cuts to length	Easy load system



EP-6485

Bi-Support Stand w/ Automatic Sheet Cutter

BATTERY TOOL 

Size Options: 24", 36", 48", 60", 72"	Use bubble, foam, poly, & paper
Touch screen operated	Feeds, dispenses, & cuts to length
Battery powered cutter	Includes battery & charger (pg.6)
Easy load system	Locking casters



EP-6500

Roll Stand



Size Options: 24", 48", 60", 72", 96"
Use kraft paper, poly, & shrink wrap
Solid steel construction
Locking casters
(EP-6500-TR, steel support tray sold separately by request)



EP-6540

Single Face / Foam Dispenser



Size Options: 24", 36", 48", 60", 72"

Use corrugated, foam, poly rolls

12" risers w/ locking casters



EP-6550

Single Face Corrugated Dispenser



Size Options: 24", 36", 48", 60", 72"

Use corrugated, foam, poly rolls

Slide cutter & brake mechanism

12" risers w/ locking casters



EP-6560

Single Face/Foam Dispenser w/ Premium Manual Cutter



Size Options: 24", 36", 48", 60", 72"

Robust rotary cutter system

Lazy susan dispensing system

5 1/4" risers w/ locking casters



EP-6565

Single Face/Foam Dispenser w/ Automatic Slide Cutter

BATTERY TOOL



Size Options: 24", 36", 48", 60", 72"

Use bubble, foam, & poly

Battery powered cutter

Includes battery & charger (pg.6)

Manual load & pull

5 1/4" risers w/ locking casters



EP-6570

Single Face/Foam Dispenser w/ Automatic Sheet Cutter

BATTERY TOOL



Size Options: 24", 36", 48", 60", 72"

Use bubble, foam, & poly

Touch screen operated

Feeds, dispenses, & cuts to length

Battery powered cutter

Includes battery & charger (pg.6)

Easy load system

5 1/4" risers w/ locking casters

POLY TUBING & BAG DISPENSERS



EP-720

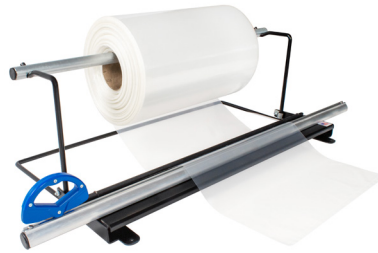
Poly Tubing Dispenser



Size Options: 6", 12", 24", 36"

Classic, simple design

Use poly tubing rolls



EP-725

Poly Tubing Dispenser w/ Slide Cutter



Size Options: 6", 12", 24", 36"
(larger sizes available by request)

Classic design

Use poly tubing rolls



EP-730

HD Table-Top Poly Tubing Dispenser



Size Options: 6", 12", 24", 36", 60"
(larger sizes available by request)

Classic design

Use poly tubing rolls



EP-740

Mobile Perforated Bag Dispenser



Size Options: 12", 24"

Use large poly bags

Height adjustable (telescoping)

Brake mechanism

Locking casters



EP-742

Economy Poly Bag/Tubing Stand



Solid steel construction, 36" tall

Easy loading system

Floor & bench mountable



EP-745

Poly Tubing, Kraft Paper, & Stretch Film Dispenser



Size Options: 12-18", 18-28",
24-36", 36-48", 48-60", 60-72"

Core ID: 3"
(Other sizes available by request)

HD steel frame

Use kraft, foil, & poly

Height adjustable (telescoping)

Table mountable



EP-750

Poly Tubing Tape Sealer

3" w/ razor cutting enclosure

Steel & plastic construction

Sliding tape mechanism

STRETCH FILM DISPENSERS & ACCESSORIES



EP-520
Pallet Rope Clip

- Hooks under pallet
- Slide-cinch to secure load
- Reusable



EP-705
Pallet Jack Tray

- 4 super-strength magnets
- Solid steel construction
- Attachable to any metal surface



EP-710
Forklift Tray - Magnetic Box, Small

- 4 super-strength magnets
- Solid steel construction
- Attachable to any metal surface



EP-715
Forklift Tray - Magnetic Box, Large

- 4 super-strength magnets
- Solid steel construction
- Attachable to any metal surface



EP-760
Hand Film Dispenser

- Film Roll Range: 3" & 5"
- 2" & 3" core available
- Tension adjustable
- Ergonomic pistol handle



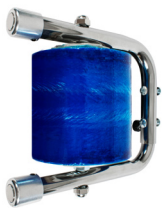
EP-760-1 S/L
Hand Film Dispenser - Short/Long

- Film Roll Options: 3", 5"
- 1", 1 1/2", 2", 3" core available
- Tension adjustable
- Ergonomic pistol handle



EP-762
C-Clamp Holder

- Solid steel construction
- Wall mountable



EP-765
Hand Bundling Dispenser

- Film Roll Range: 3" & 5"
- Tension adjustable
- Magnetic attachment



EP-768
Bundling Table Top Attachment

- Table mountable box wrapping station
- Robust steel tubing design
- Retractable arms



EP-770
U-Hook Stretch Film Holder

- 3 super-strength magnets
- Solid steel construction
- Attachable to any metal surface



EP-772
Tower Film Holder

- Solid steel construction
- Wall mountable





EP-780
Hand Inserts



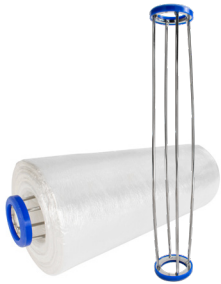
- Core Size: 3"
- Built-in brake
- Comfort grip
- Ears feature for roll stability



EP-785-2
Core for Coreless Film



- Core Size: 2"
- Size Options: 15", 18", 20"
- Solid steel construction
- Pairable with most Encore Packaging film applicators



EP-785-3
Core for Coreless Film



- Core Size: 3"
- Size Options: 15", 18", 20"
- Solid steel construction
- Pairable with most Encore Packaging film applicators



EP-800
Pistol Grip



- Film Roll Range: 12-20"
- Built-in Core Size: 2-3"
- Roller bearing design for tension control
- Base stabilizer



EP-790
Wrapstik



- Handle Length: 35 1/2"
- Accommodates all core sizes
- High & low reach
- Tension adjustable
- (Support handle available by request)

EP-790-XL
Wrapstik

- Handle Length: 48 1/2"
- Accommodates all core sizes
- High & low reach
- Tension adjustable
- (Support handle available by request)



EP-795
Vertical Pallet Wrapper



- Film Roll Range: 48-72"
- Height & tension adjustable
- Locking casters



EP-810
Pistol Grip w/ T-Handle



- Film Roll Range: 12-20"
- Built-in Core Size: 2-3"
- Roller bearing design for tension control
- Base stabilizer



EP-820
Ball Grip




- Film Roll Range: 12-20"
- Built-in Core Size: 2-3"
- Roller bearing design for tension control
- Base stabilizer



Core Inserts
Sizes available by request



EP-830 
Lightweight Dispenser for Pre-Stretch

- Film Core Options: 1 1/2", 2", 3"
- Film Roll Range: 15", 18"
- Use pre-stretch film
- Quick connect feature
- Includes magnet attachment



EP-835 
Lightweight Dispenser

- Film Core Options: 1 1/2", 2", 3"
- Film Roll Range: 15", 18"
- Tension adjustable for non-pre-stretch film
- Quick connect feature
- Includes magnet attachment



EP-838 
Economy Magnetic Dispenser


- Size Options: 15-18", 18-20"
- Solid steel tube
- Tension adjustable
- Includes magnet attachment



EP-838-BS 
Bidirectional Roller Ultimate Stretch

- Size Options: 15-18", 18-20"
- Geared device for stretching
- Includes magnet attachment



EP-840 
Ultra Stretch


- Film Range: 12-20"
- Built-in Core Size: 2-3"
- Use pre-stretch or thin gauge cast film
- Maximizes stretch of film



EP-860 
Bubbleator

- Film Range: 12-20"
- Built-in Core Size: 2-3"
- Use regular cast film
- Creates pockets of pre-stretch



EP-880 
Stringer Device

- Film Range: 12-20"
- Built-in Core Size: 2-3"
- Use pre-stretch film
- Creates aerating strips of film



EP-890 
Roper Device

- Film Range: 12-20"
- Built-in Core Size: 2-3"
- Use pre-stretch film
- Film & rope adjustable



EP-1330 
T-Puller for Polypropylene/Stretch Film

- Zinc alloy steel
- Use film or polypropylene strapping
- Steel blade for cutting



EP-3600 
Roper Strapping Cart

- Manually converts pre-stretch film into strong strapping
- Use pre-stretch film
- 10" rubber tires



EP-3640

Automated Stretch Strapper



Automatically dispenses pre-stretch film rope as strong strapping

Speed & length adjustable

Use pre-stretch film

10" rubber tires

EP-3680

Twine Maker



Dispenses pre-stretch film as twine

Stand, table, and wall mountable

3" locking casters w/ stand



OUTSIDE

INSIDE



OUTSIDE

INSIDE



CS-4420

Corner Spike

Helps quickly secure loads

Unique tie off system

12 per case

CS-4460-ECO

Corner Spike - Bio-Degradable Plastic

Helps quickly secure loads

Unique tie off system

12 per case



DT-750

Devil's Tail - Small

Helps quickly secure loads

Unique tie off system

25 per case



DT-760

Devil's Tail - Large

Helps quickly secure loads

Unique tie off system

25 per case



PC-120

Pallet Clip

Standard gauge

Securely ties stretch strapping

250 per case



R34PC3

Poly Alligator Clip

Standard gauge

Securely ties stretch strapping

1000 per case





EP-6700-25
Motorized Ring Wrapper - 25"



Max Box Size: 16 x 16"

Efficient & easy multi-layer package protection

Use 3" & 5" film rolls

Includes: foot pedal operation

(V-shaped rollers available by request)



EP-6700-25-ST
Adjustable Support Table

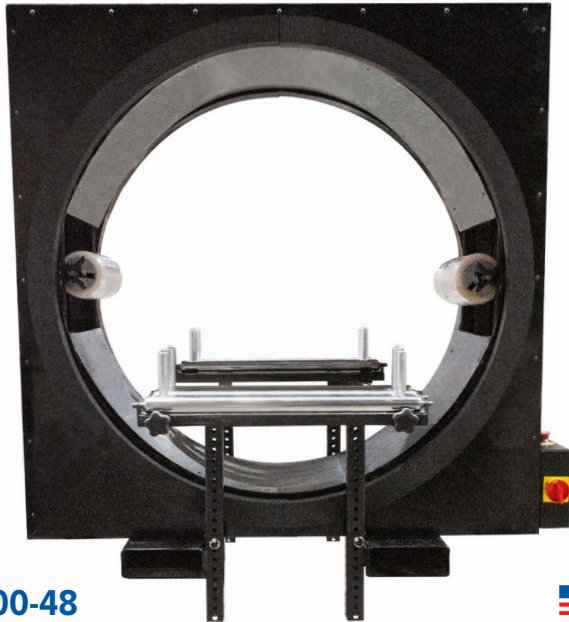


Solid steel construction

Height adjustable

Conveyor ready

Locking casters



EP-6700-48
Motorized Ring Wrapper - 48"



Max Box Size: 30 x 30"

Efficient & easy multi-layer package protection

Use up to 10" film rolls, tension adjustable

Includes: foot pedal operation

(V-shaped rollers available by request)



EP-6700-48-ST
Support Table



Solid steel construction

Conveyor ready

Locking casters



EP-6800

Manual Box Wrapper



Max Box Size: 20 x 15"

Efficient & easy multi-layer package protection

Use stretch film, netting, tape, & other consumables

Table mountable



EP-6840

Motorized Box Wrapper - Cocooner Device



Max Box Size: 20 x 15"

Efficient & easy multi-layer package protection

Use stretch film, netting, tape, & other consumables

Speed adjustable & table mountable

Includes foot pedal operation

Encore Packaging, LLC strives to cater to customers' product needs.

Our team of engineers, machinists welders, and assemblers have the unique capabilities to customize solutions.

By working together, we can bring to life the solutions you need to meet your customers' needs by creating, adapting, or modifying a packaging product.

Note: custom size requests for existing products can be provided depending on product.

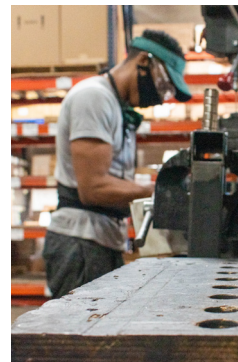
PRIVATE LABELING

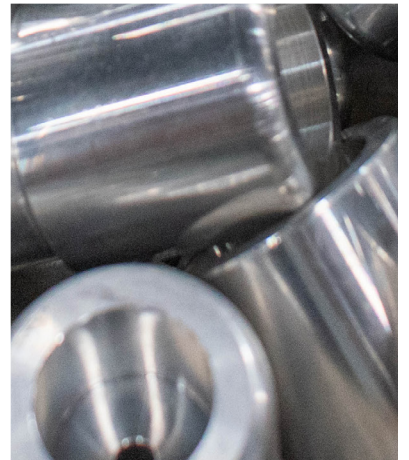
Available by request on tape dispensers, utility knives, film dispensers, kraft paper dispensers, and more! Privately labeled products can help brand development/recognition, marketing campaigns, and repeat business.

We can also provide private labeling to our catalogs and product literature upon request.

To get started or to learn more information, contact our customer service team:

P (847) 735-8105 | customerservice@encorepack.com





Distribution Central

Register on our website to access helpful product information:

- Schematics
- Sell sheets
- Videos (information & instruction)
- Ordering & tracking (coming soon)

Questions?

Contact distribution@encorepack.com for answers or to help register.



P (847) 735-8105 | F (847) 735-8297
sales@encorepack.com | www.encorepack.com
500 East Bunker Court, Vernon Hills, IL 60061
P.O. Box 595, Winnetka, IL 60093

